

# Ashton Properties, LLC

## Office Building

*Building Address:*  
2001 Nichols Dr.  
Huntsville, AL 35802

**Year Built:**  
1998

**Land:**  
2± Acres

**Building Size:**  
40,500 square feet  
+/- 13,000 sq. ft. per  
floor (3 floors)

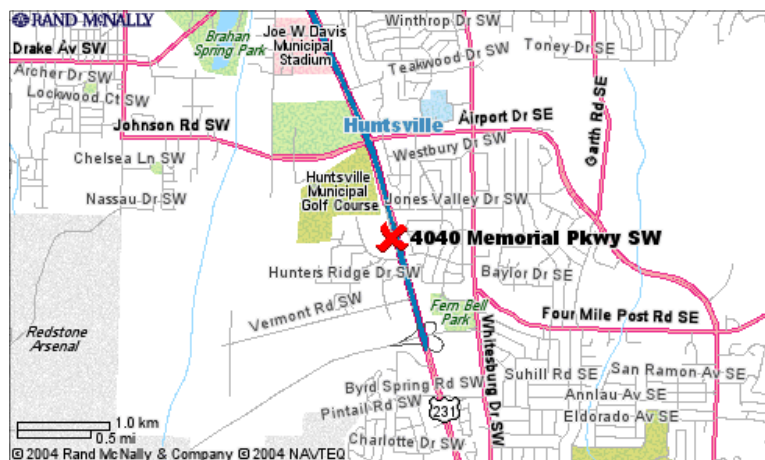
**Parking:**  
133 spaces

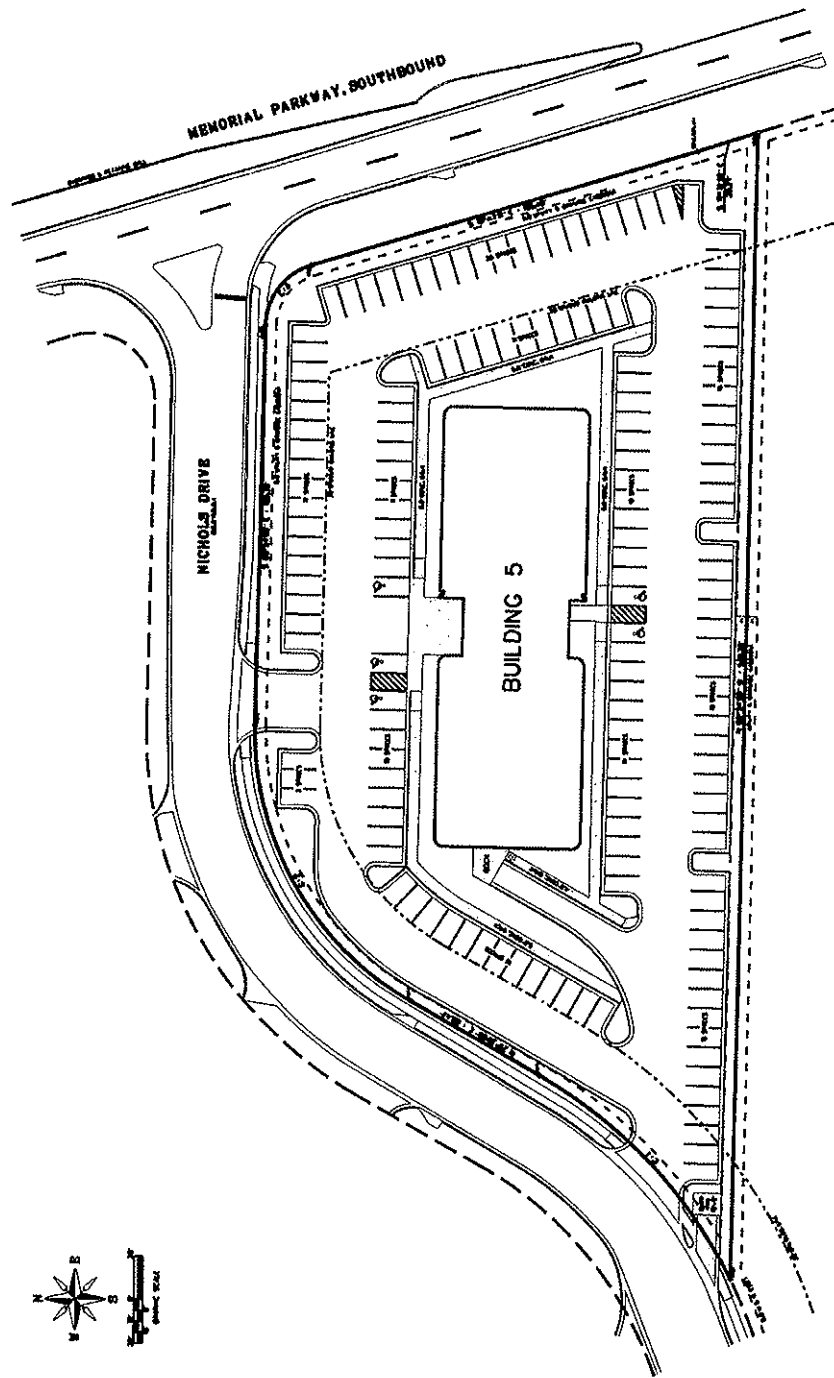
**Tenants:**  
Available June 2009

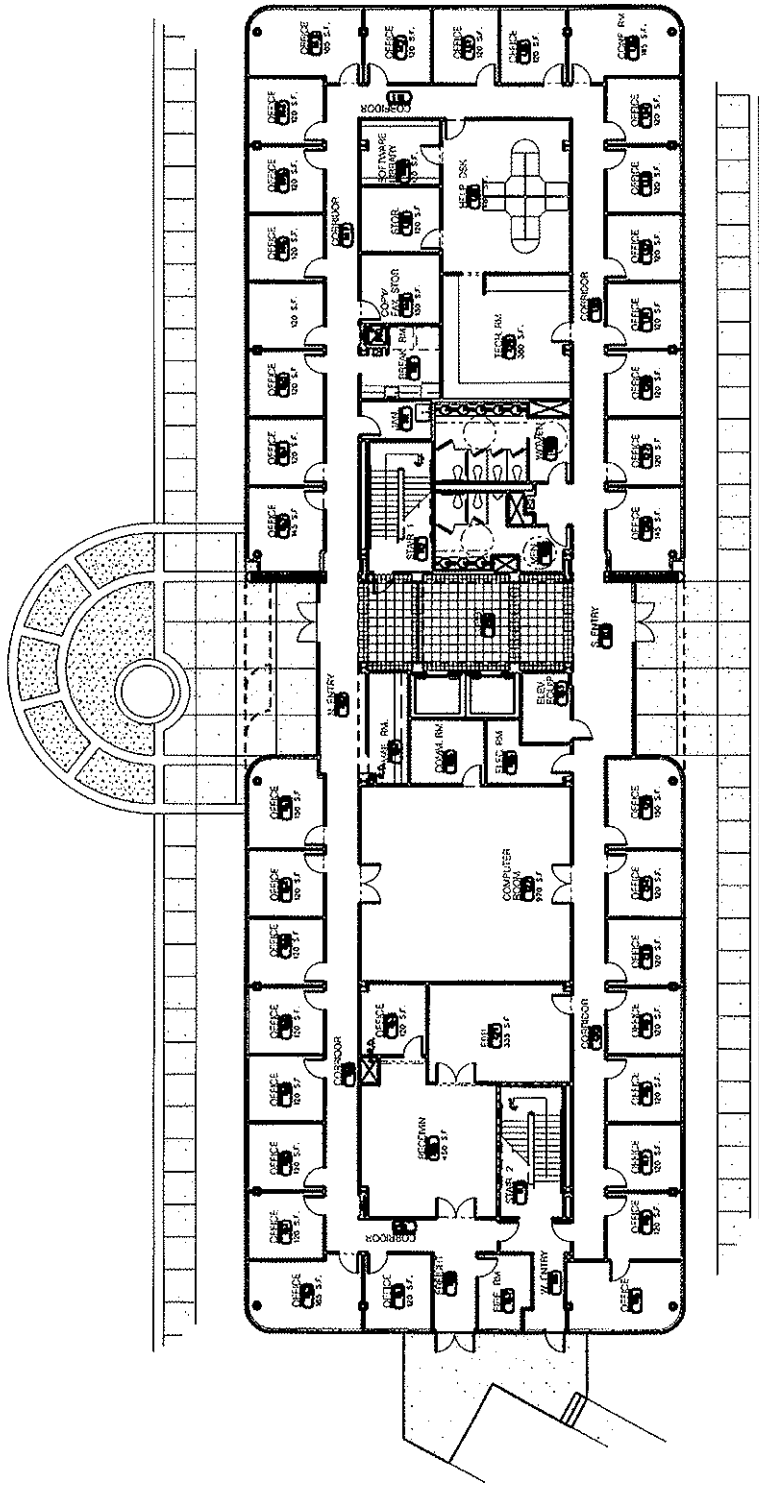


### BUILDING CAPABILITIES:

This three-story steel structured office building is located at the southwest corner of Memorial Parkway and Nichols Drive. The total building square footage is approximately 40,500 and the site will accommodate 133 parking spaces, truck access and pedestrian access to existing buildings.







FIRST FLOOR PLAN





